



Super 300 Cast Iron Boilers

WWW.CHAUFFAGEKAR.COM



Boiler Materials

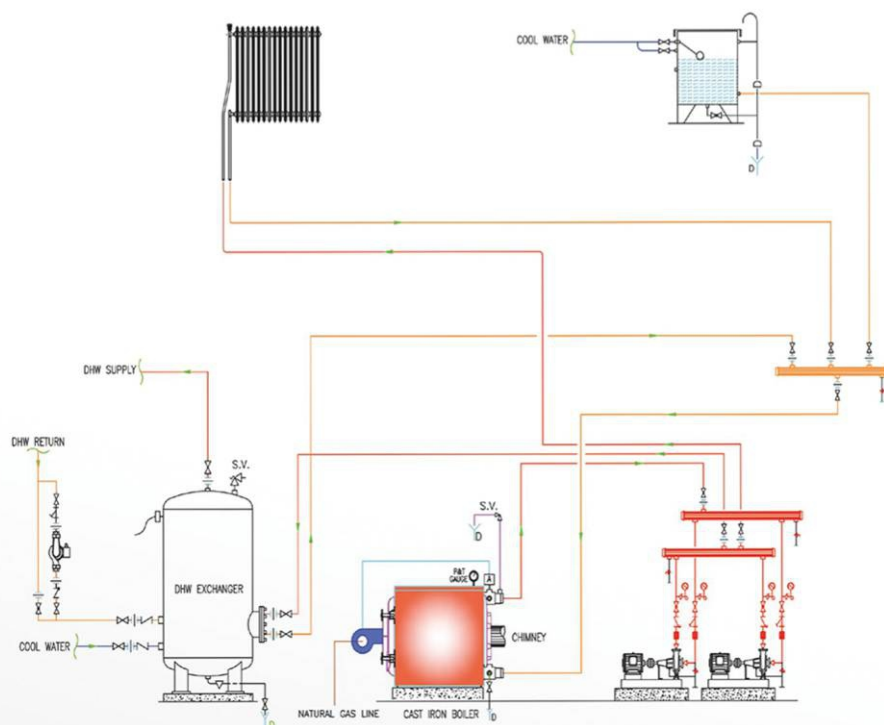
Boiler is made of fire resistance cast iron which in addition to proper heat transfer has high resistance against oxidation and effective chemical substances on the surface. It is resistance against natural elements such as humidity and liquidity of combustion, it can be said that Super 300 boilers of Chauffagekar Industrial Company is exploitable in consecutive generation.

Body Resistance and Work Pressure

Boiler's thickness is about 5mm. and internal part of boiler has been covered for increasing heating surface with raised fins. The exploitation pressure of boiler is equal to 4 atmospheres and is responsive for 13 floors.

Boiler Function

Boiler installation and operation is as same as the installation of all boilers and there isn't any special note about its installation. It occupies less space in heating room. And through changing coil and double Source with an energy storage can be easily classified by one solar collector. This boiler is in compatible with all burners.



Utilization

S300 boiler with mentioned features are suitable for small buildings up to the surface of 600m., and is responsive to all requirements of the building , such as 2 units 4 floors buildings up to the surface of 75m.

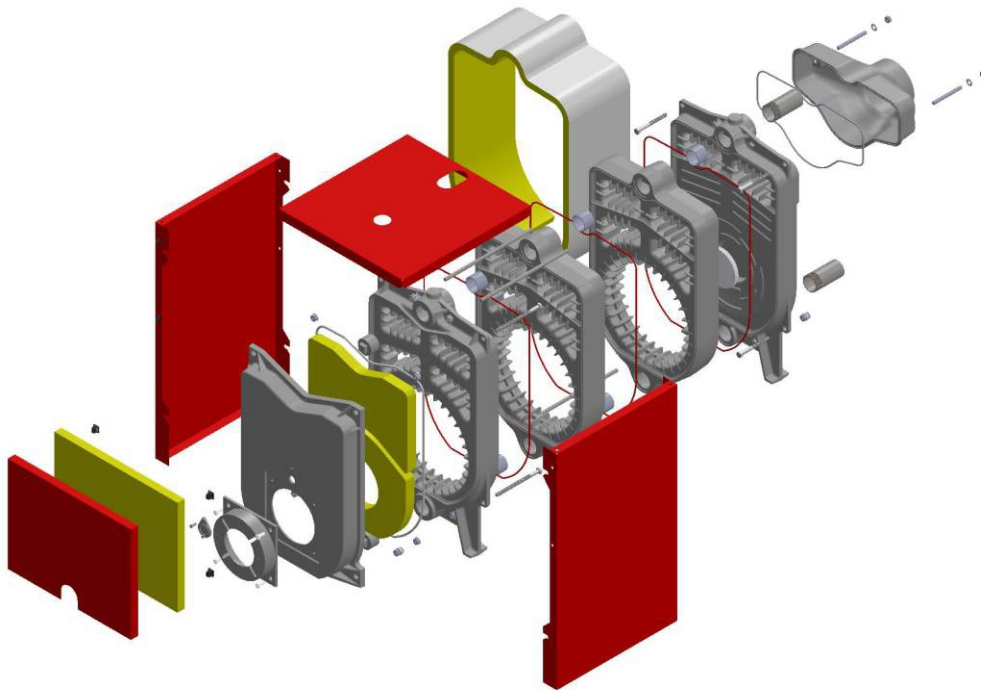
It is clear that parallel installation of a number of S300 boilers can increase Efficiency regarding to the number of boilers. Also the idea of installation of several boilers is the principle of energy certificate that permanently use less fuel.

Quality certificate and Guarantee

S300 boiler has mandatory standard of 4472, 4473 and also ISO9001:2008 from SGS Company. It has 10 years guaranteed, and is for safe and efficient installation. Damaged blade will be changed.

Transportation

Due to non-assembled sections of S300 boiler, it can be easily transport by one people and can be install in heating room. Also due to this capability it is possible to install it in heating room in all building process and prevent from damaging of the boilers.



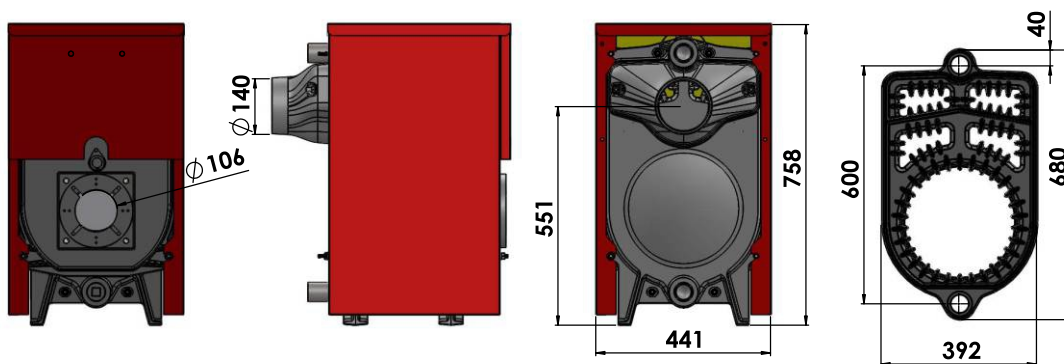
Cyclic Checking

Due to the light weighted of S300 boiler, back and front door can be opened easily, and can be transfer by one person. Large furnace and existing smoke passes plated let you to clear the boiler by brush. So by installation of S300 boiler to the combustor and smoke passes plated and also water channels you will be ensured that after each service you can set it up again.

Design of Super 300 Boiler

S300 boilers are suitable solution for space heating and using hot water in buildings. This boiler has been supplies in two models of Nipple and O-ring.

Classification of the number of S300 boilers for gaining higher capacities are suitable solution for making some stage in different seasons that makes the usage of fuel more efficient.



NO. SECTIONS	PCs	4	5	6	7	8	9
HEATING OUTPUT	Kw	39.3	50.8	62.3	73.7	85.2	96.7
	KCal/hr	33,800	43,700	53,600	63,400	73,300	83,100
	btu/hr	134,000	173,000	213,000	251,000	291,000	330,000
WATER CONTENT	Litres	17.9	22.3	26.8	31.3	35.8	40.2
EXHUAUST DIAMETER	mm	144					
COMBUSTION CHAMBER CAPACITY	m3	0.323	0.0403	0.0484	0.0565	0.0645	0.0726
INLET/OUTLET CONNECTION SIZE	DN(″)	1 1/2″					
BURNER FLANG DIAMETER	mm	110					
LENGTH	mm	600	682	764	846	928	1010
NET WEIGHT	kg	177	205	233	262	291	321
MAX. TEMPERATURE	°C	105					
MAX. WORK PRESSURE	Bar	4					
GAS FUEL KIND	Nutral Gas						
LIQUID FUEL KIND	Gas Oil						

Head office: No. 180, Taleghani Ave., 15718 Tehran, Iran

Tel: +98 21 88 30 93 27 -8

Fax: +98 21 88 30 93 26

Email: info@chauffagekar.com

Exp: Exp@chauffagekar.com

www.chauffagekar.com